

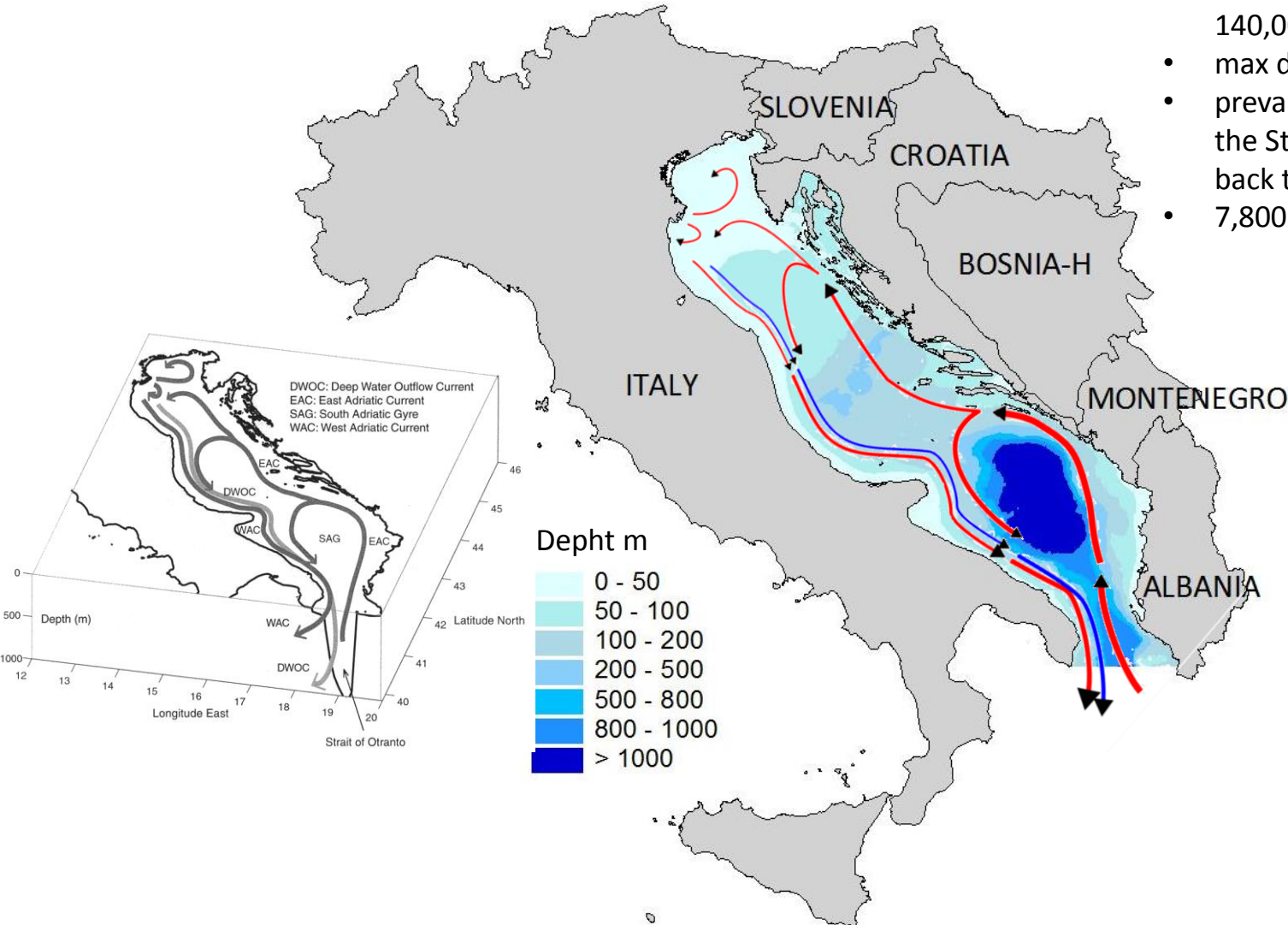


# La gestione della pesca in Adriatico

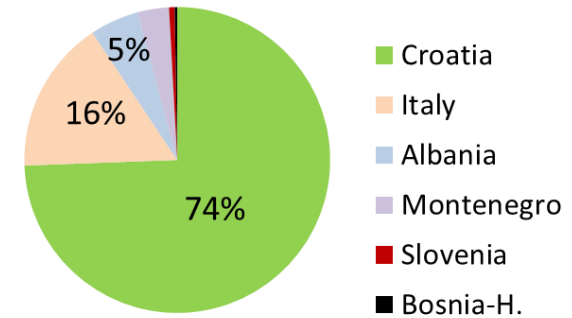
***Mauro Marini***

*Istituto di Scienze Marine-UOS di Ancona*

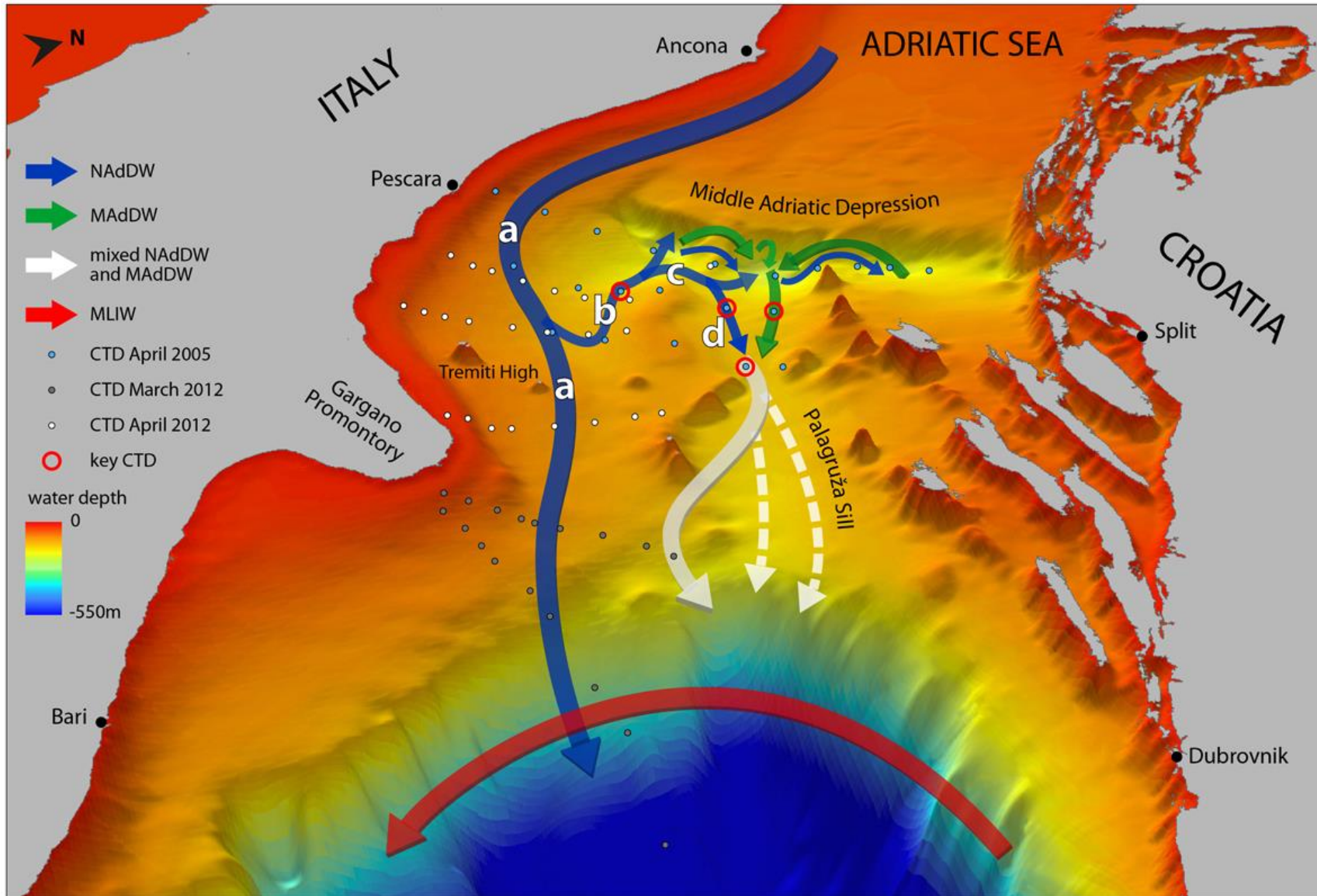
*Consiglio Nazionale delle Ricerche*

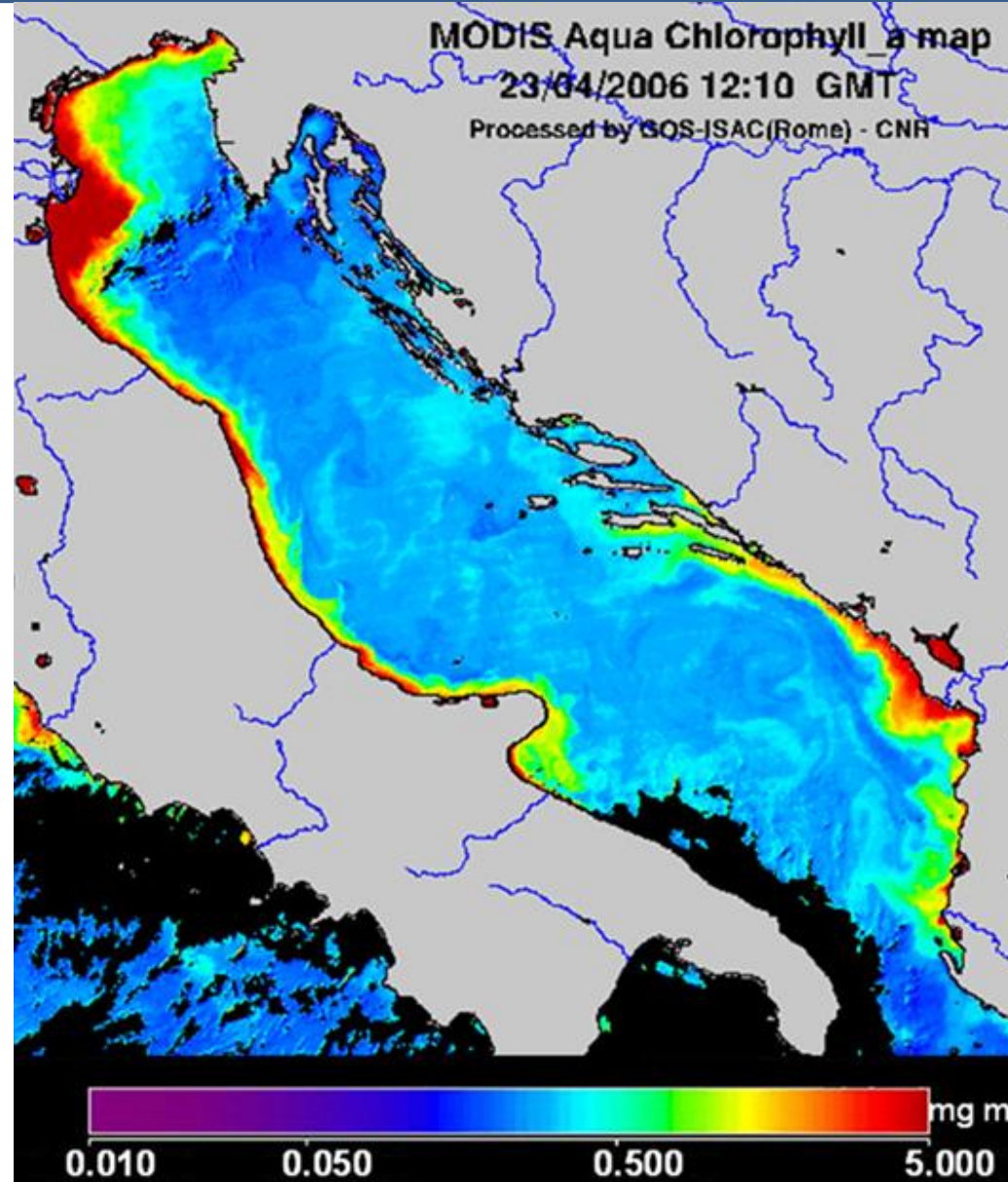


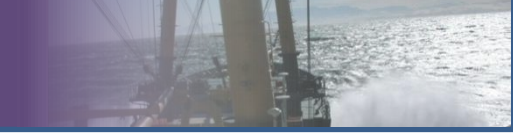
- semi-enclosed basin with a surface of around 140,000 km<sup>2</sup>
- max depth 1,200 m
- prevailing currents flow counterclockwise from the Strait of Otranto, along the eastern coast and back to the strait along the Italian coast
- 7,800 km of coastline



- contains more than 1,300 islands, most along the Adriatic's eastern coast especially in Croatia (1,246)
- dilution basin, collecting a third of the freshwater flowing into the Mediterranean
- surface temperature ranges from 26°C in summer to 9°C in winter

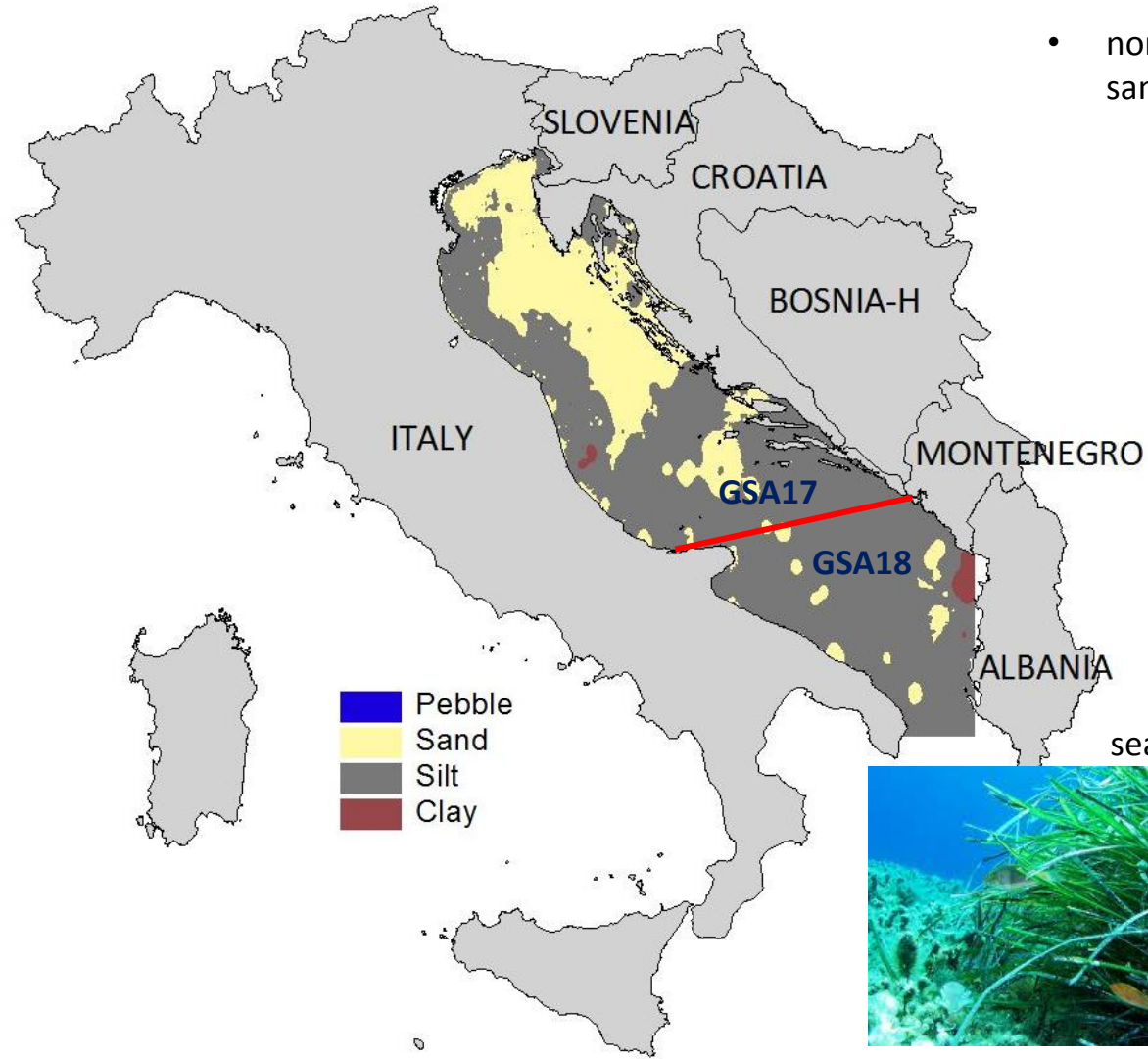






The coastal area reflects the peculiar oceanographic and morphological features of the Adriatic Sea.

Two different types of coasts can be evidenced:



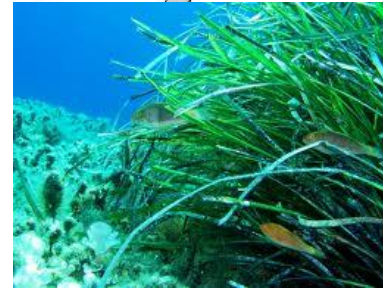
- north and central western coasts mostly sandy and muddy



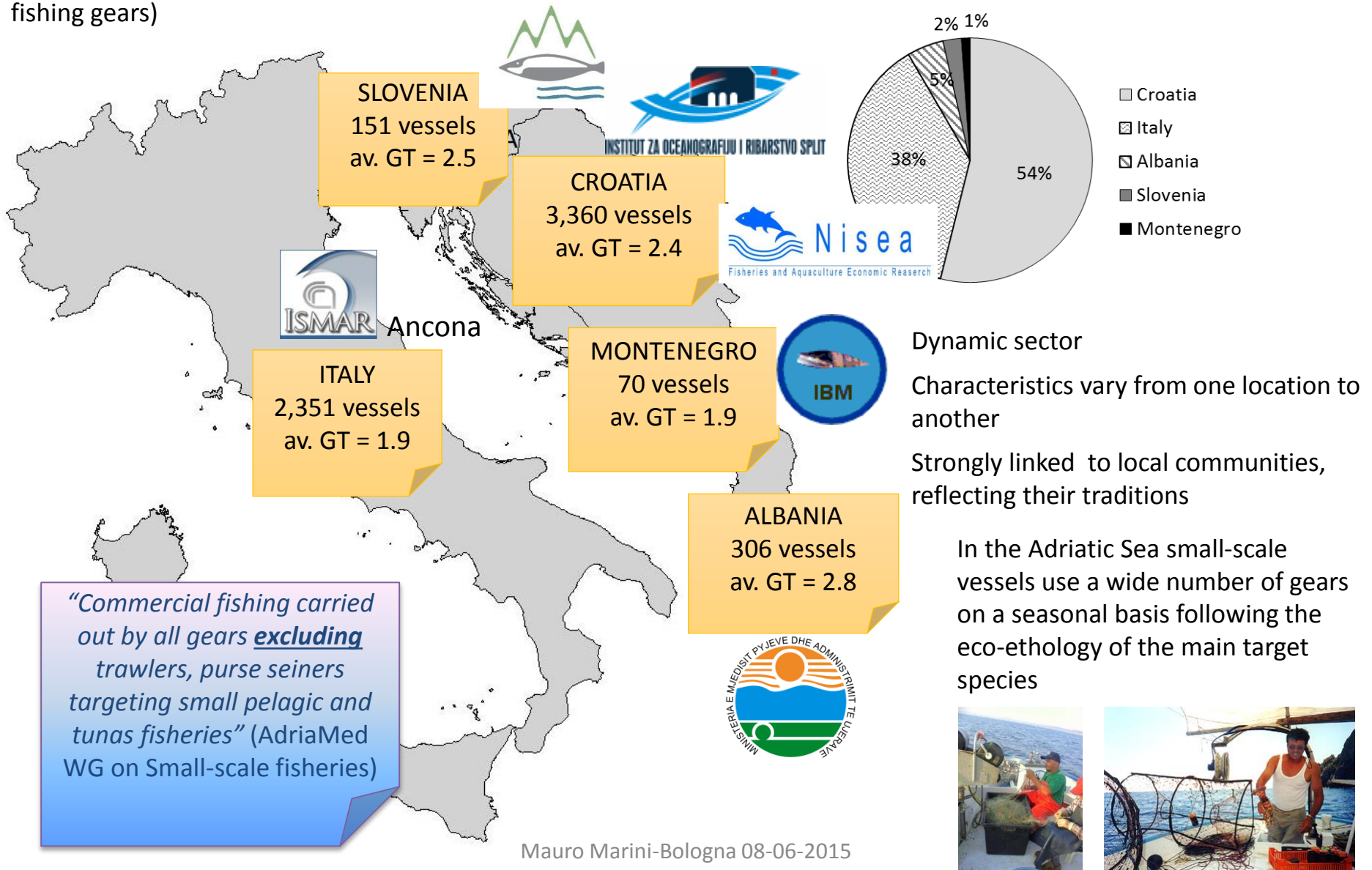
- south-western and eastern coasts mostly rocky



seagrass coralligenous



The characteristics of the coastal areas strongly influence the activities of **small-scale fisheries** (target species and fishing gears)



Dynamic sector

Characteristics vary from one location to another

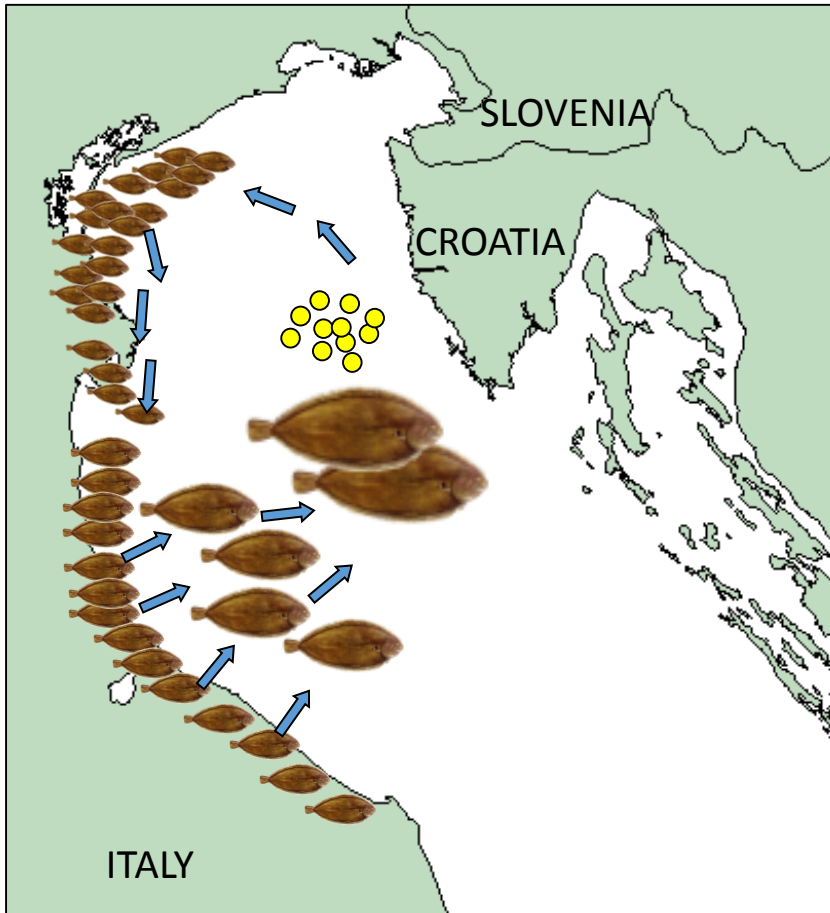
Strongly linked to local communities, reflecting their traditions

In the Adriatic Sea small-scale vessels use a wide number of gears on a seasonal basis following the eco-ethology of the main target species



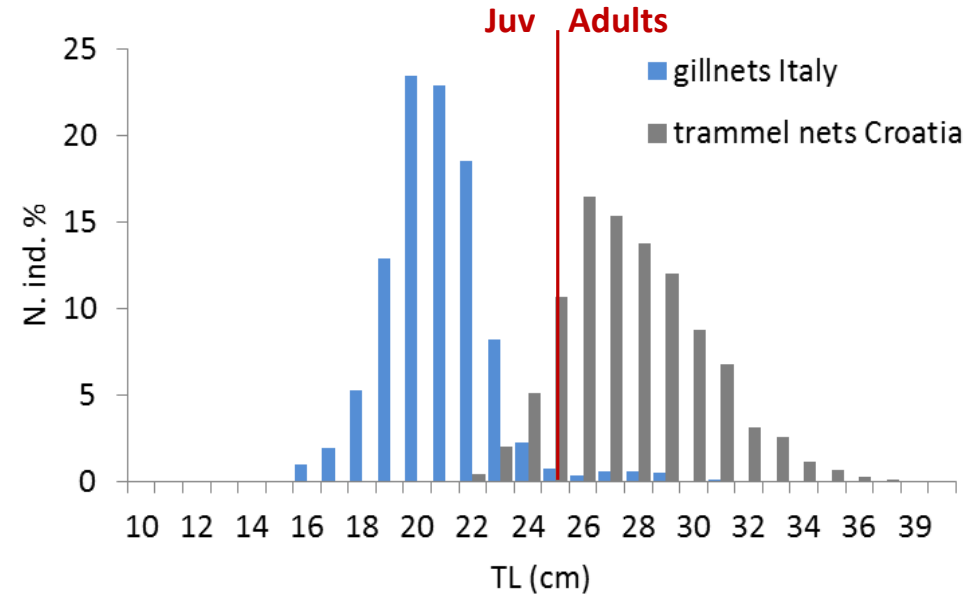
## Stocks condivisi: il caso di *Solea solea* (sogliola)

- Adults aggregate close to Croatian waters and juveniles mainly concentrate in the Italian side
- Juveniles targeted by gillnetters in Italy & adults targeted with trammel nets in Croatia (Western coast of Istria)

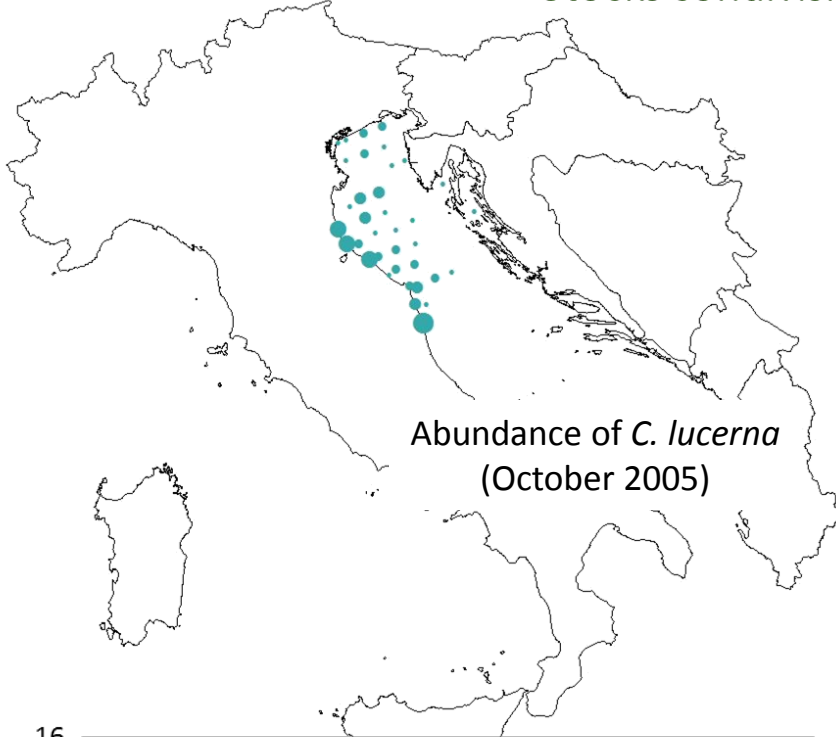


Multi-annual investigation of the spatial distributions of juvenile and adult sole (*Solea solea* L.) in the Adriatic Sea (northern Mediterranean)

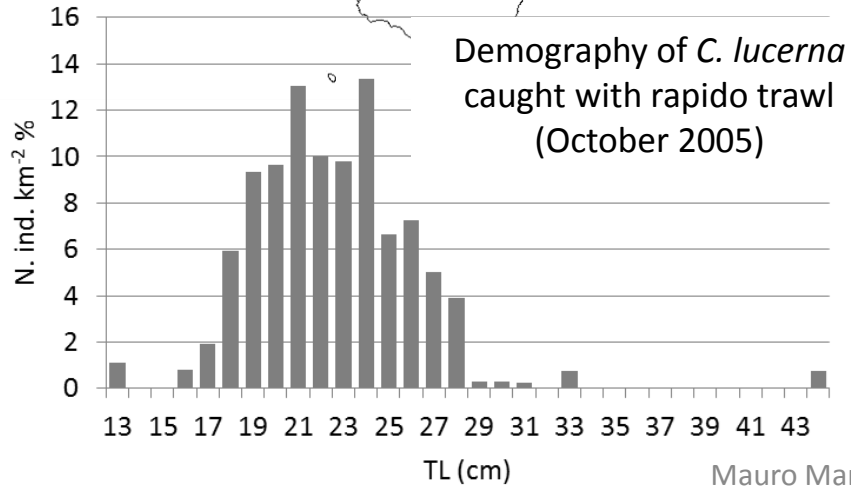
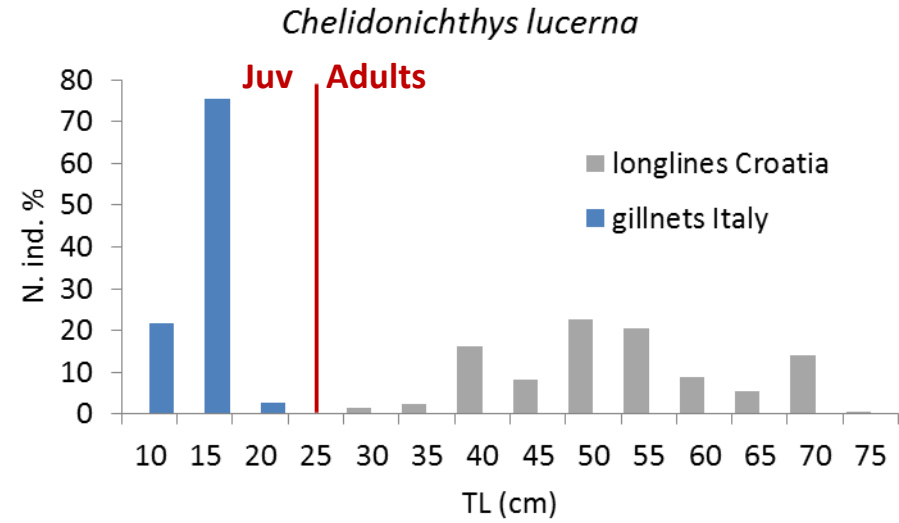
Fabio Grati <sup>a,\*1</sup>, Giuseppe Scarcella <sup>a</sup>, Piero Polidori <sup>a</sup>, Filippo Domenichetti <sup>a</sup>, Luca Bolognini <sup>a</sup>, Roberto Gramolini <sup>a</sup>, Claudio Vasapollo <sup>a</sup>, Otello Giovanardi <sup>b</sup>, Saša Raicevich <sup>b</sup>, Igor Celić <sup>b</sup>, Nedo Vrgoč <sup>c</sup>, Igor Isajlovic <sup>c</sup>, Aljaž Jenič <sup>d</sup>, Bojan Marčeta <sup>d</sup>, Gianna Fabi <sup>a</sup>



## Stocks condivisi: il caso di *C. lucerna* (gallinella, testola, ...)



- Juveniles mainly concentrated in the Italian side and adults mostly aggregate in the Croatian waters
- Abundant by-catch (retained and discarded) for gillnetters in Italy & target species for bottom longliners in Croatia



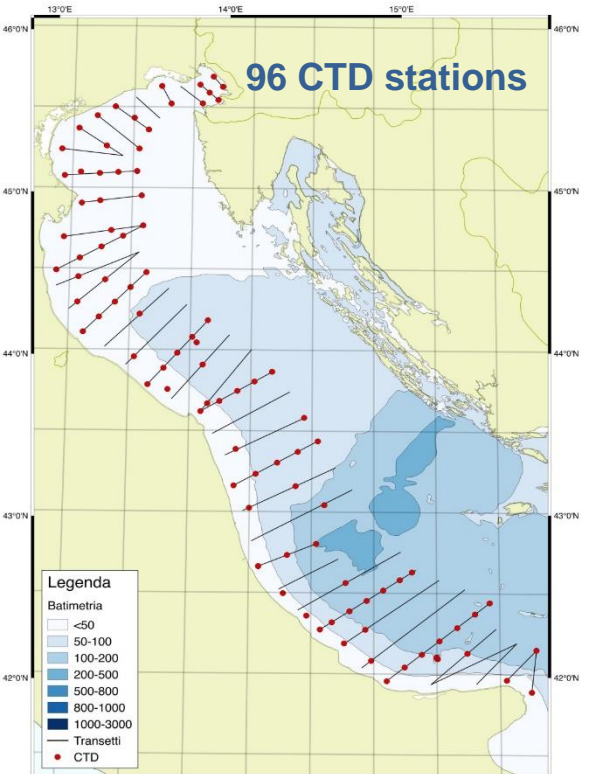
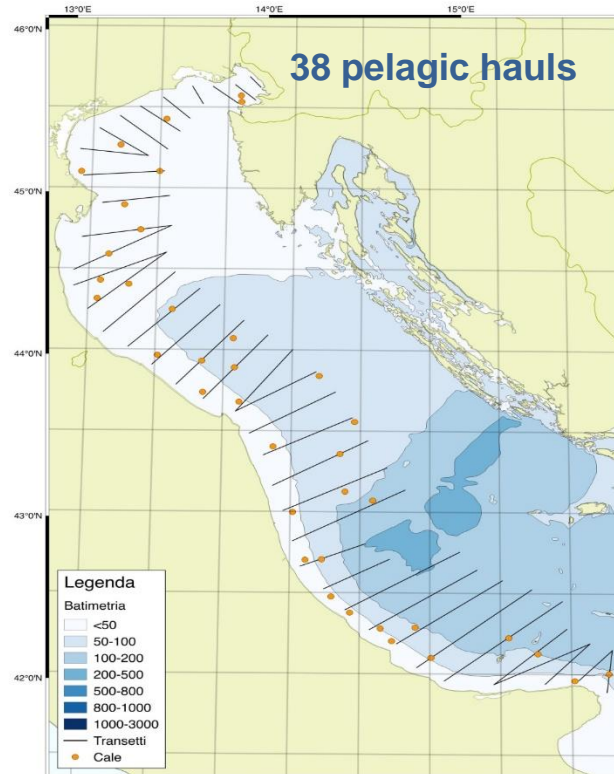
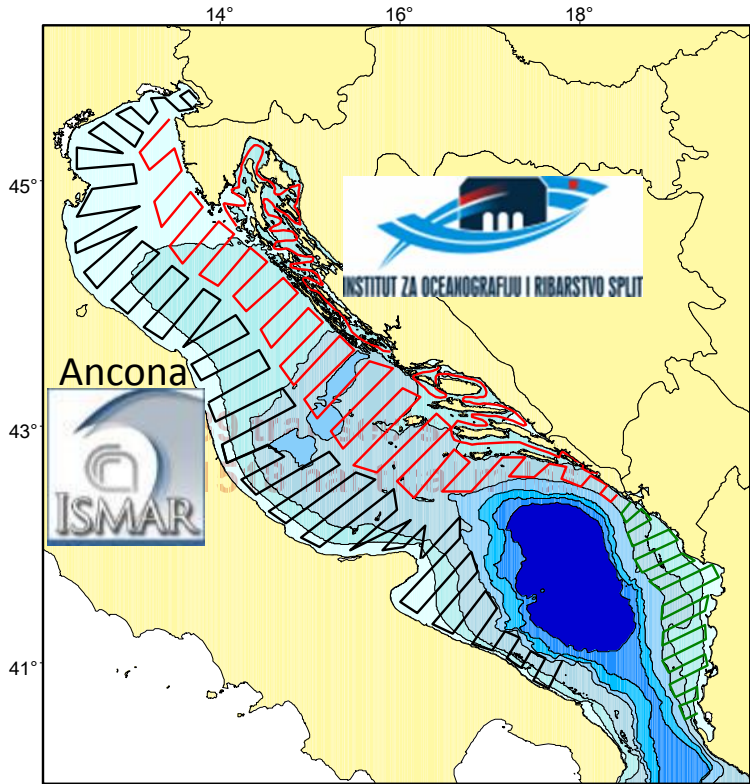
Juvenile caught with gillnet in Italy



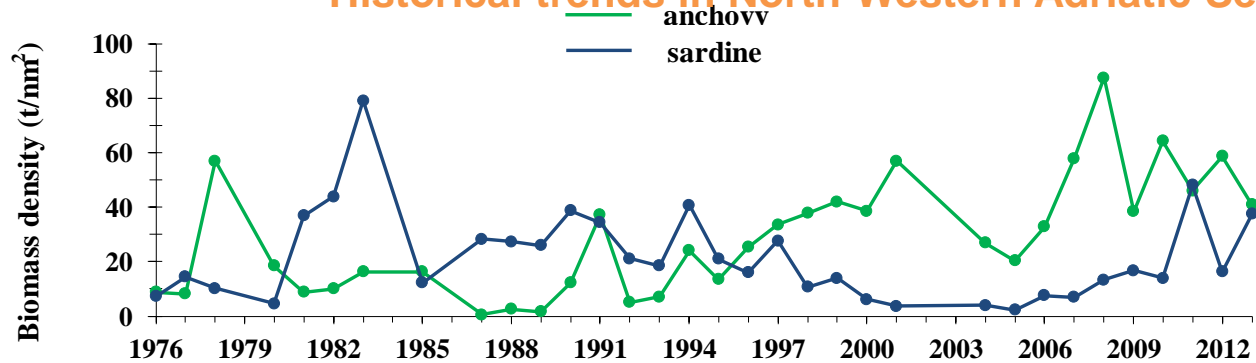
Adult caught with longlines in Croatia







### Historical trends in North-Western Adriatic Sea 1976-2013



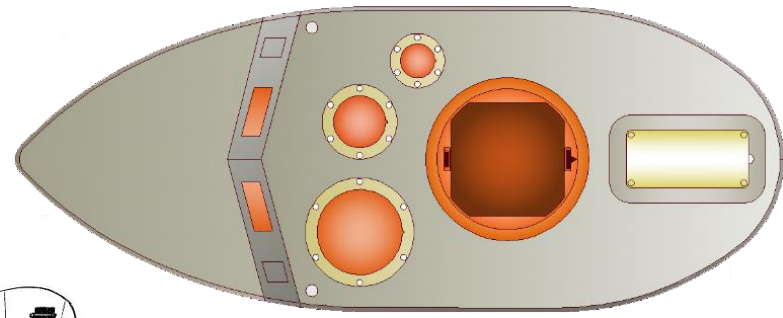
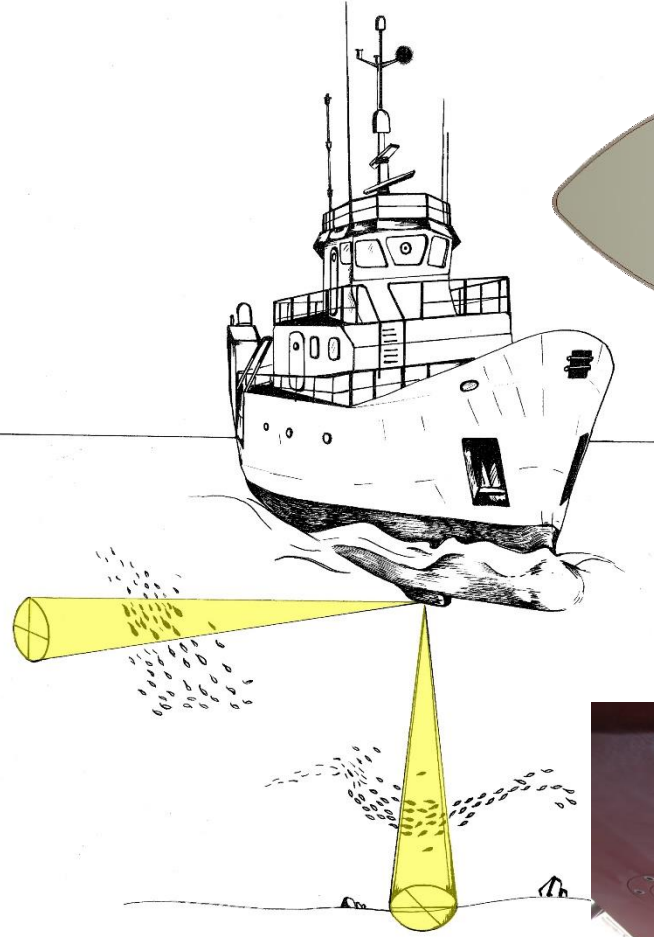
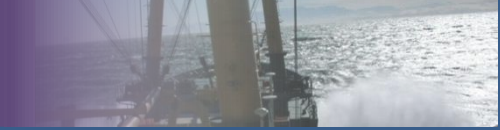
Year 2013

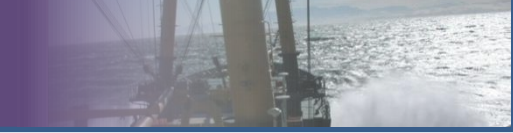
**Anchovy Biomass: 297,824 t**

**Sardine Biomass: 272,923 t**

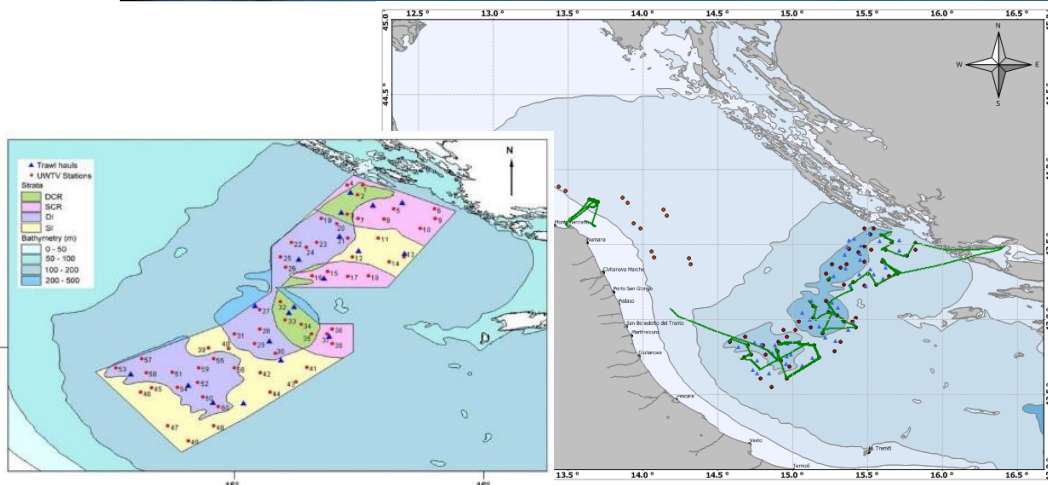
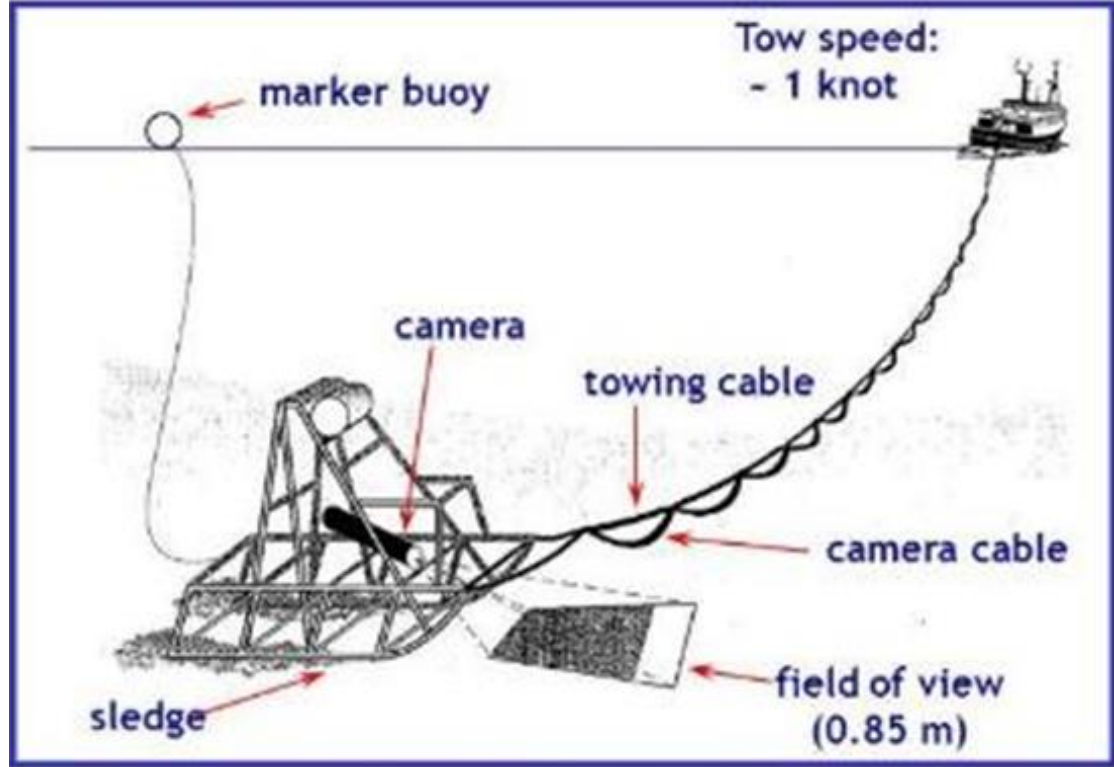
**Sampled Area: 7,286 nm<sup>2</sup>**







Stocks condivisi: il caso di *Nephrops norvegicus* (scampo)



INSTITUT ZA OCEANOGRAFIJU I RIBARSTVO SPLIT

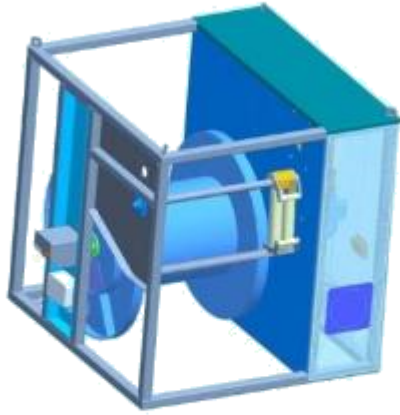
- 05-27 May 2009**
- 06-28 August 2010**
- 28 April 2012 – 14 May 2012**
- 4 – 22 April 2013**
- 22 April – 14 May 2014**
- 7-24 April 2015**

Mauro Marini-Bologna 08-06-2015

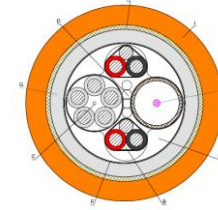




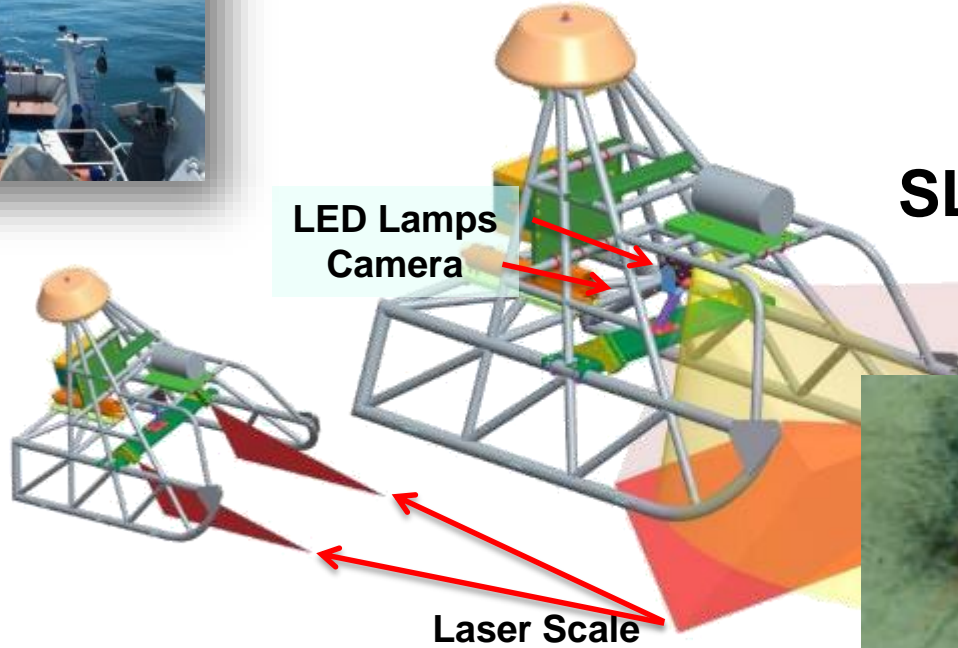
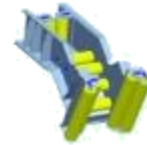
Partially acquired from CNR-  
ISMAR on RITMARE funds



## ELECTRO MECHANICAL TOWING CABLE 800m

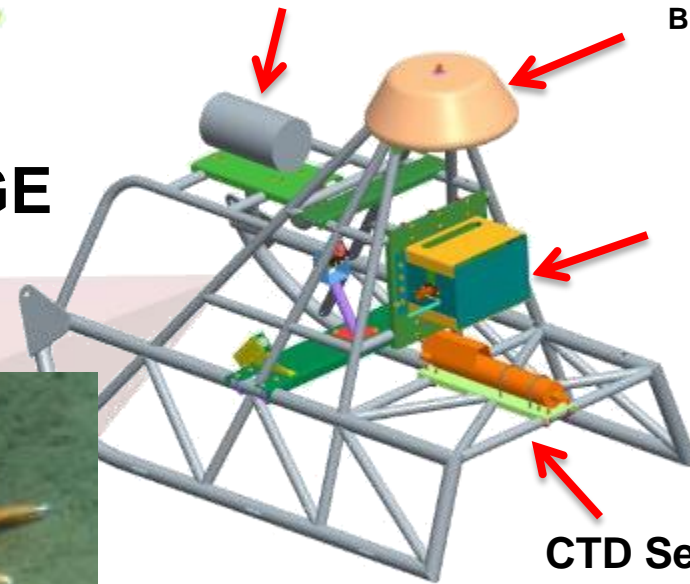


## Electric winch with wireless control



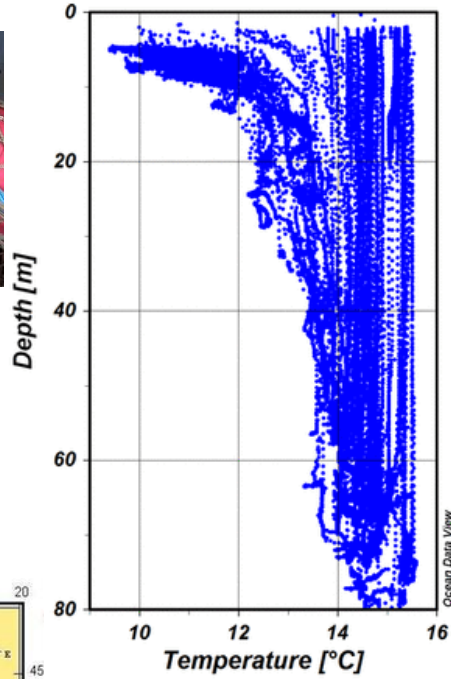
## SLEDGE

## Bottom unit (JB)

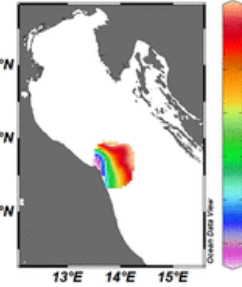


# Adriatic Sea Fishery and Oceanography Observing System (FOOS)

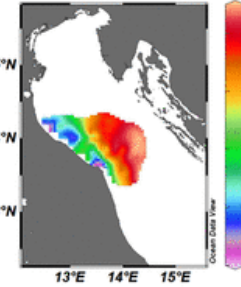
FOOS January 2014 - Ismar CNR Ancona



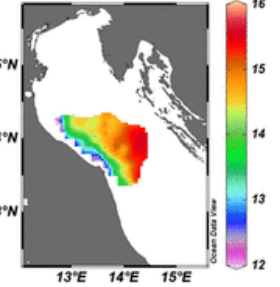
Temperature [°C] @ Depth [m]=2



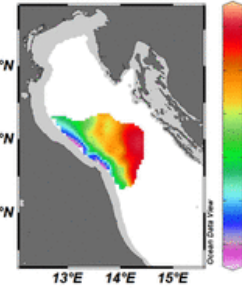
Temperature [°C] @ Depth [m]=10



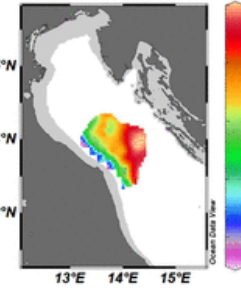
Temperature [°C] @ Depth [m]=20



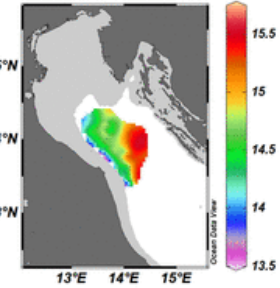
Temperature [°C] @ Depth [m]=30



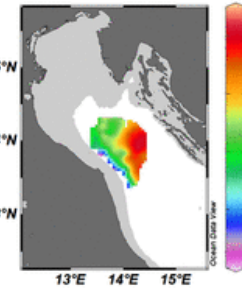
Temperature [°C] @ Depth [m]=40



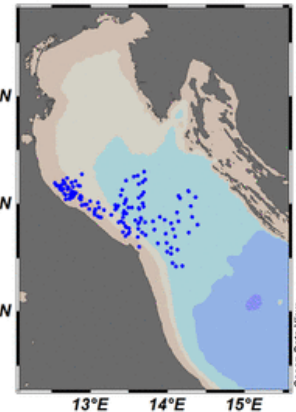
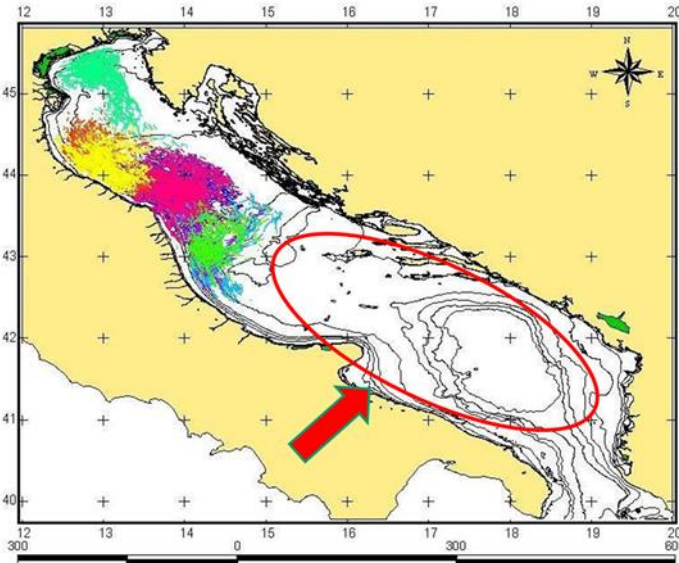
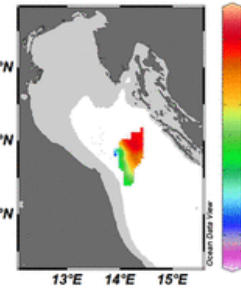
Temperature [°C] @ Depth [m]=50



Temperature [°C] @ Depth [m]=60



Temperature [°C] @ Depth [m]=70



# Grazie per l'attenzione





# Grazie per l'attenzione



Image © 2015 TerraMetrics  
Data SIO, NOAA, U.S. Navy, NGA, GEBCO

Google earth